

Sponsored by KIDASA Software

Stoplight CHARTS

Home

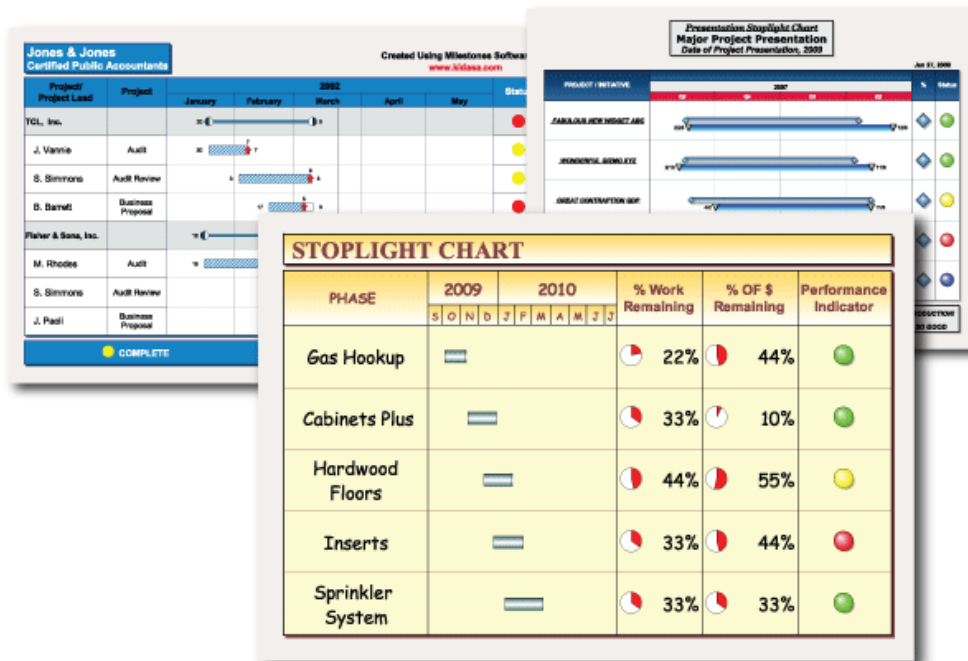
BUY!

Products

Free Trial

Examples




Stoplight Charts, at-a-glance project reporting.









Created with
Milestones
PROFESSIONAL






Stoplight CHARTS

Stoplights are typically red, yellow and green and can have many meanings. Here is a sampling:






-  Ahead of schedule.
-  On schedule.
-  Behind schedule

-  Exceeds expectations
-  Meets expectations
-  Does not meet expectations

-  0-5 days behind schedule
-  6-12 days behind schedule
-  13+ days behind schedule

-  Schedule and Cost within bounds
-  Schedule OK, Over Cost
-  Behind schedule, Cost OK
-  Behind schedule AND Over Cost
-  Future, not yet started

Presentation Stoplight Chart

PROJECT / INITIATIVE	Actual Cost	Baseline Cost	2010				Status
			Q3	Q4	Q1	Q2	
FABULOUS NEW WIDGET ABC	\$1,000	\$2,000	ALL IS WELL				
WONDERFUL GIZMO XYZ	\$3,300	\$3,000	SCHEDULE OK, OVER COST				
GREAT CONTRAPTION QDP	\$1,500	\$2,000	BEHIND SCHEDULE, COST OK				
HOT NEW INVENTION "MONEYMAKER"	\$2,000	\$1,000	BEHIND AND OVER COST				
LATEST & GREATEST SOFTWARE TOOL "NO GREEN"	\$9,000	\$8,000	FUTURE				

Stoplight CHARTS

In addition to simple stoplights, many other indicators can be used for at-a-glance status. Here are a few examples.

Earthquake Prone Areas

Area	Earthquake Prone Areas											Quakes	
	1998	1999	2000	2001	2002	2003	2004	2005	2006	2007	2008		
Area 1												12	☺
Area 2												8	☺
Area 3												8	☺
Area 4												23	☹
Area 5												16	☹
Area 6												4	☺
Area 7												1	☺

Earthquake Prone Areas

Emoticons are used in this statistical timeline which shows earthquakes over an 11 year period by area.

The incidences of major earthquakes are totaled in the column named Quakes. If the number in the Quakes column exceeds 15, a red unhappy symbol is shown for that area. A yellow neutral face is shown for between 5 and 14. Anything less than 5 gets a happy face.

Indicators Sampler, Critical Tasks

PHASE	2010								% Pie Indicator	Number Driven	STATUS	STATUS Indicator
	J	F	M	A	M	J	J	A				
Gas Hookup	█								22%	◆ 11 - 20	ON SCHEDULE	█
Cabinets Plus	█								33%	▲ 21 - 30	CRITICAL	█
Hardwood	█								44%	◆ 11 - 20	COMPLETE	✓
Inserts	█	█							33%	■ 41 - 50	FUTURE	█
Sprinkler	█	█	█						33%	▲ 21 - 30	CRITICAL	█
Electrical	█	█	█						44%	▼ 51 - 60	COMPLETE	✓
Plumbing			█	█	█				33%	▼ 51 - 60	FUTURE	█
Stainless Steel				█	█	█			33%	● 0 - 10	CRITICAL	█
Mirrors + Doors				█	█	█			33%	↑ 31 - 40	CRITICAL	█
Garage doors						█	█	█	44%	◆ 11 - 20	COMPLETE	✓

Indicator Sampler

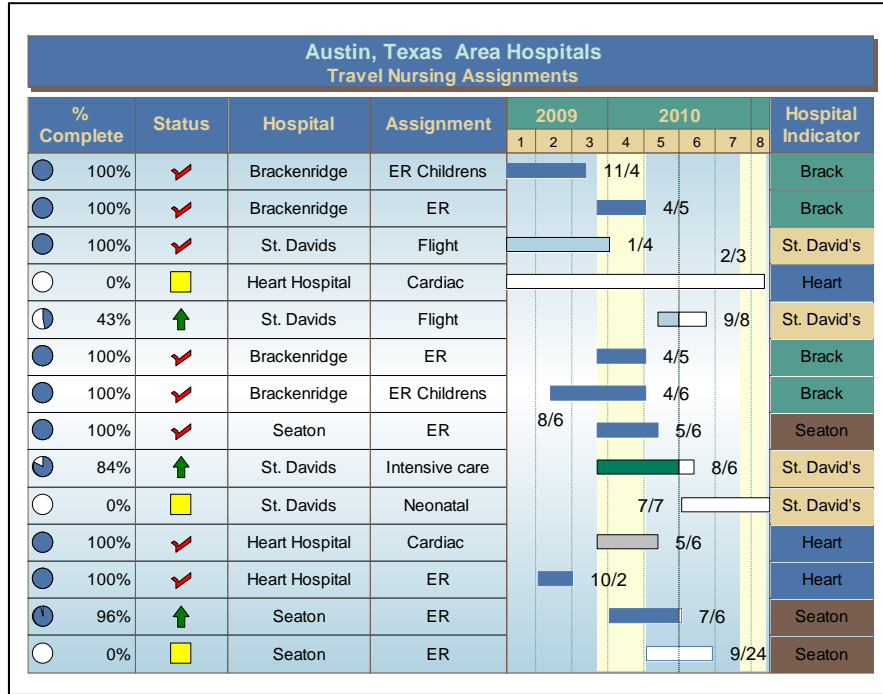
The **Pie Indicator** column shades the pie based on the number in the column.

The **Number Driven** column is set up to show a different symbol for specified number ranges.

Status Indicator shades with a color when text in the **Status** column is on schedule (green) or critical (red). If it is complete, a check-mark is shown.

Stoplight CHARTS

Travel Nursing Assignments



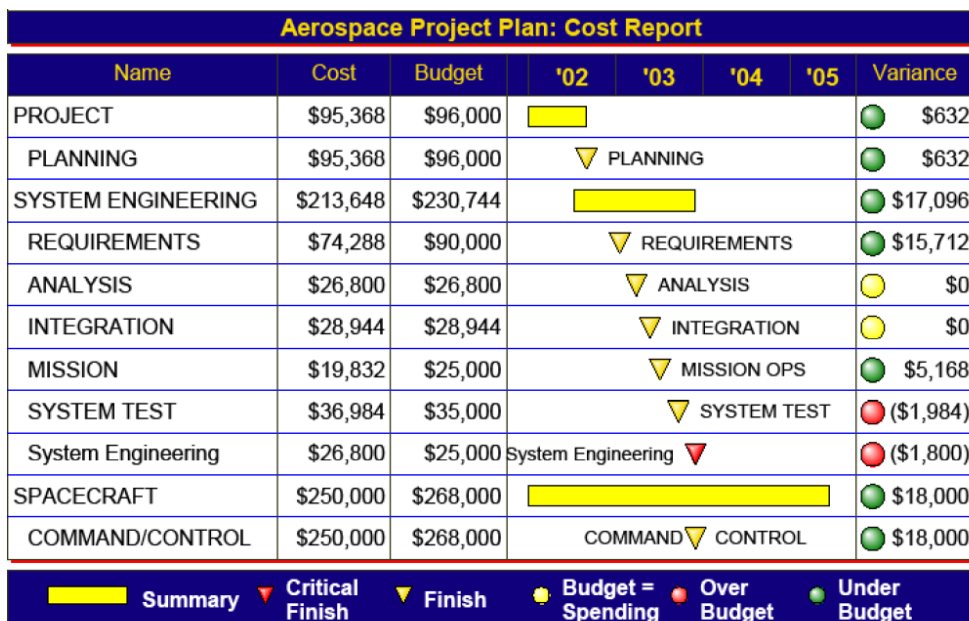
Travel Nursing Assignments

The **Pie Indicator** column shades the pie based on the number in the column.

The **Hospital Indicator** column uses the "Fill cell with symbol color" feature to display a color based on the text located in the **Hospital** column.

The **Status** column displays a red check if the % complete is 100, a yellow square if the % complete is zero and a green arrow if the % complete is between 1 and 99.

Aerospace Project Plan Cost Report

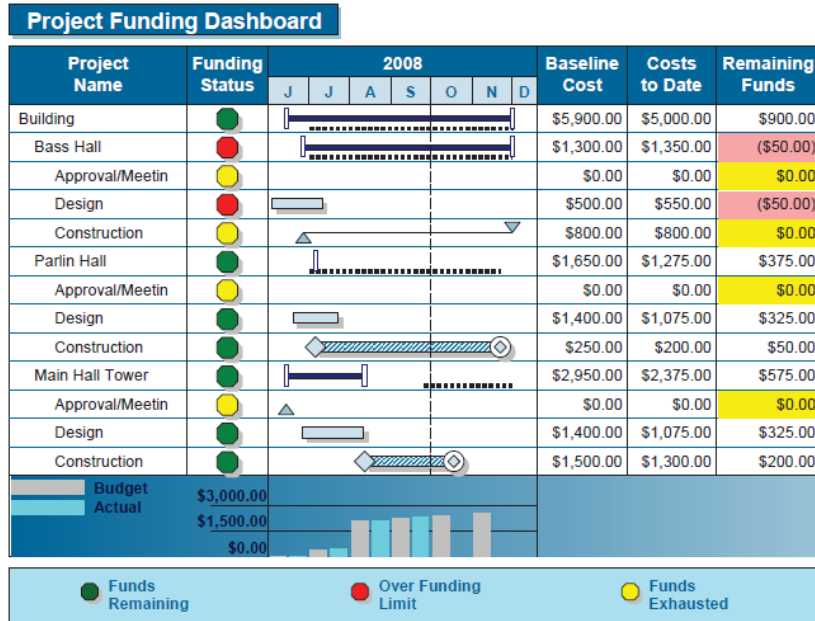


Aerospace Project Plan Cost Report

This example shows simple cost variance stoplights. In this case the stoplights refer only to the project's budget and are not associated with whether or not the project is ahead or behind schedule.

Stoplight CHARTS

Project Funding Dashboard

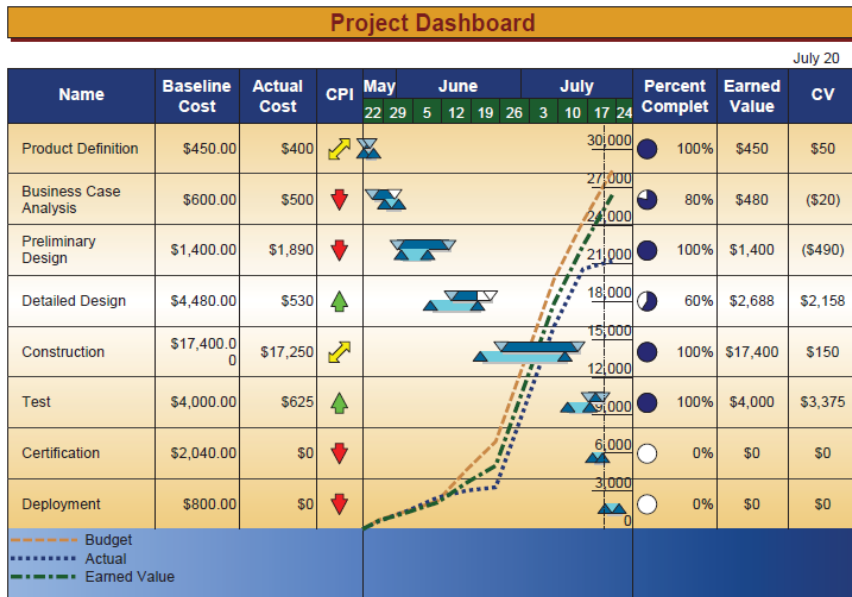


Project Funding Dashboard

This Remaining Funds column on this schedule is set up to automatically color when the costs to date exceed the baseline cost (red) and when the costs to date equal the baseline cost (yellow).

The funding status stoplight will be green if there are remaining funds, yellow if remaining funds are \$0 and red if remaining funds are negative.

Project Dashboard, Earned Value



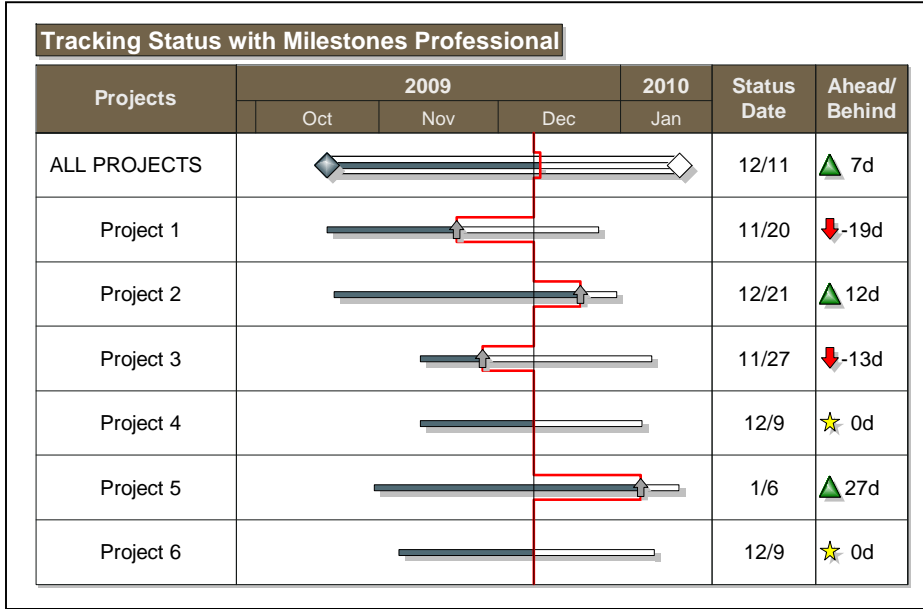
Project Dashboard, Earned Value

This Milestones Professional schedule includes an earned value graph which provides additional information at-a-glance, similar in concept to stoplight charts.

The **CPI** column displays an indicator which provides useful integrated cost/schedule performance information.

Stoplight CHARTS

Tracking Status



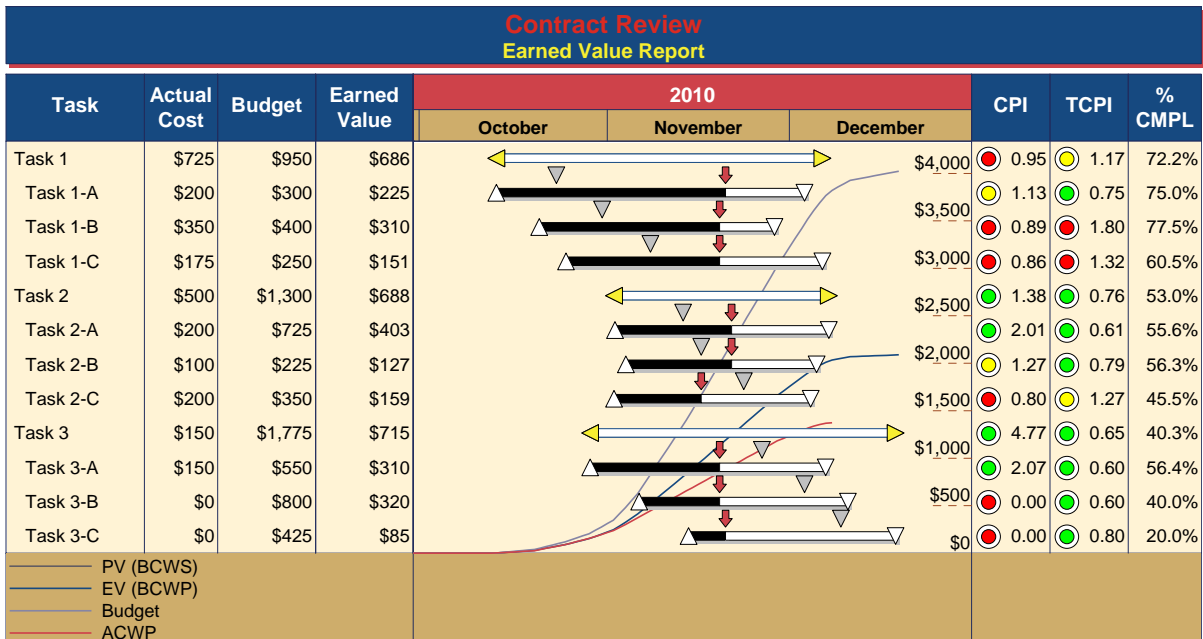
Tracking Status

This Milestones Professional schedule uses different symbol shapes and colors to show status in the Ahead/Behind column.

If the project is ahead, a green diamond is shown. If behind, a red arrow. If neither ahead nor behind, a yellow star.

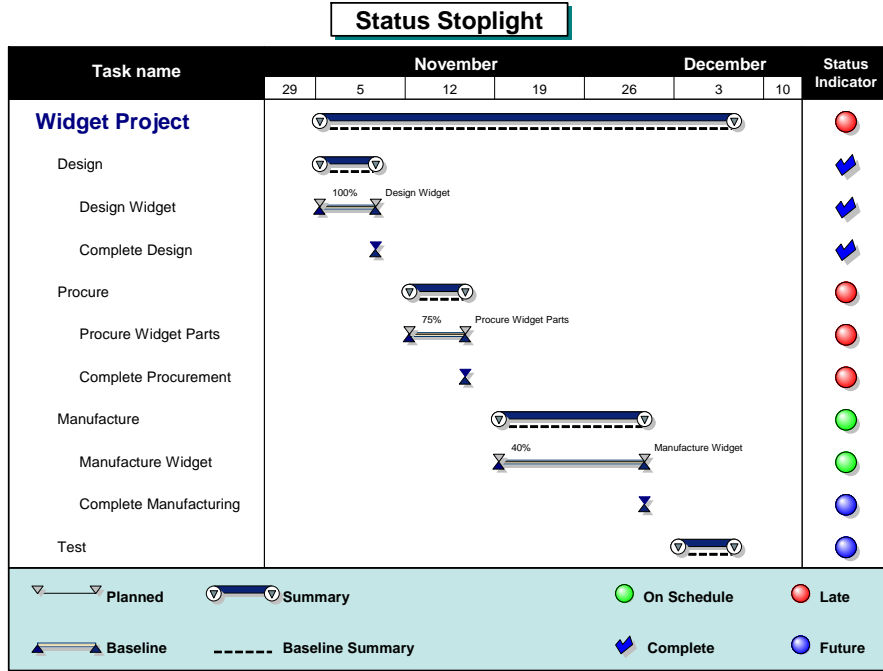
Contract Review, Earned Value Report

This Milestones Professional schedule uses Milestones Professional's built-in earned value calculations. Additionally, two stoplight columns have been added, one for CPI (Cost Performance Index) and one for TCPI (To Complete Performance Index)



Stoplight CHARTS

Status Stoplight - imported from Microsoft Project

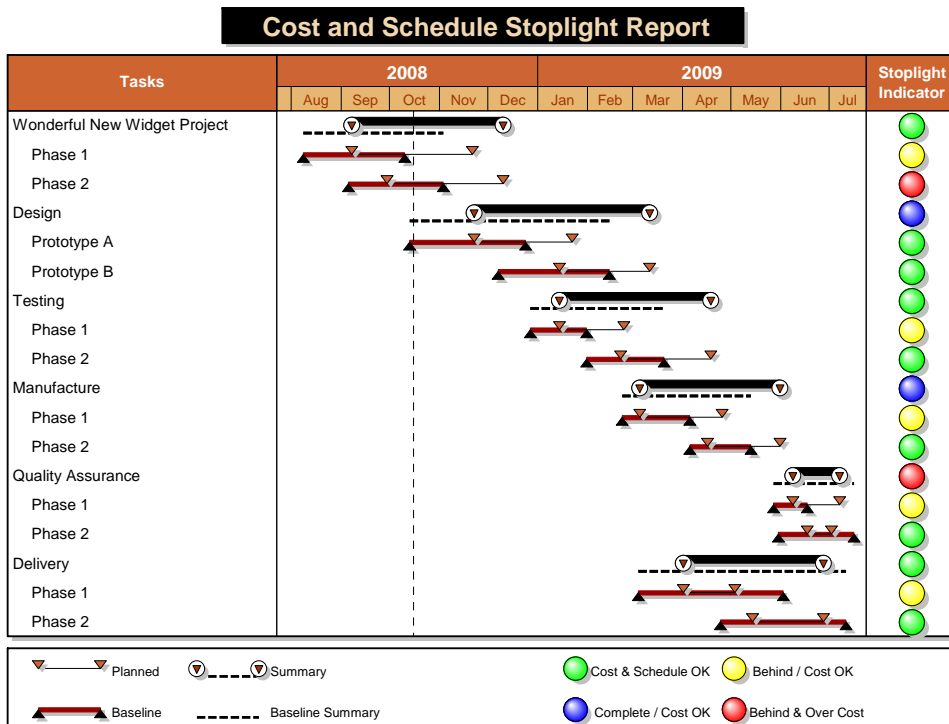


Milestones Professional offers a large selection of report formats for Microsoft Project users.

This Status Stoplight format uses the Microsoft Project Status field to display a stoplight or a check mark.

The legend below the schedule describes how the indicators work.

Cost and Schedule Stoplight Report - imported from Microsoft Project



The Microsoft Project Cost Variance field is used to determine if Cost is OK.

The Project Status field is used to determine if schedule is ok.

Stoplight CHARTS

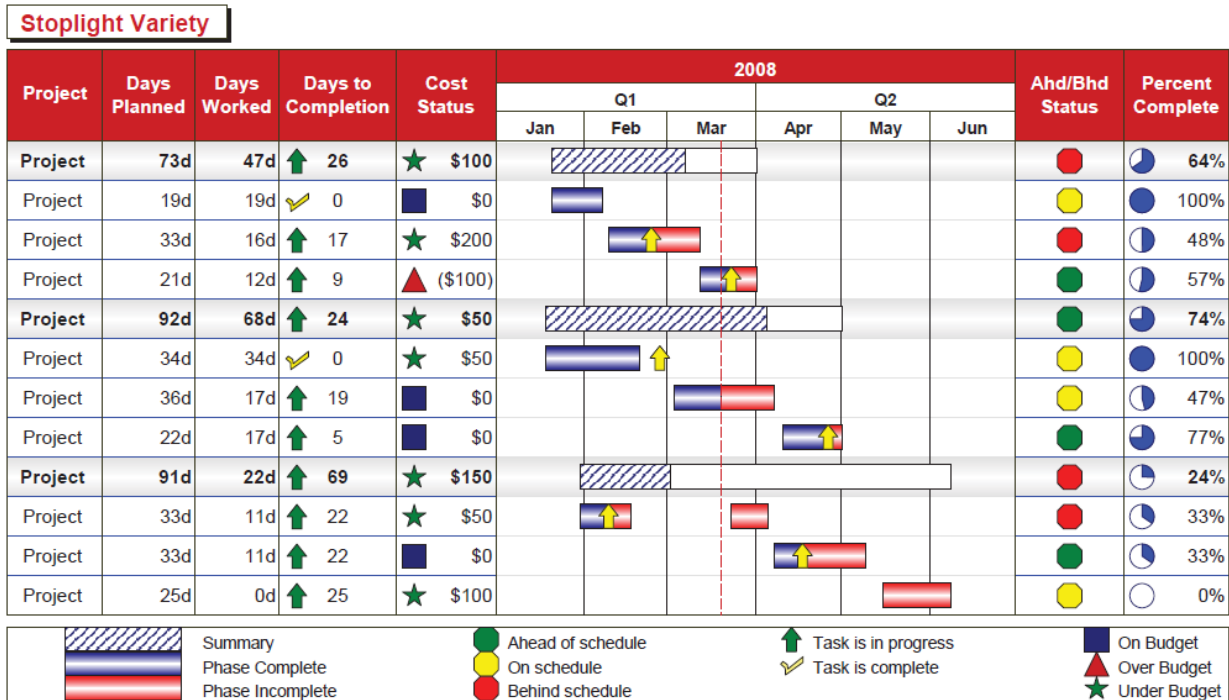
Create Stoplight and Indicator Charts with Milestones Professional

You have seen some stoplight and indicator examples.

Milestones Professional offers almost anything you can think of in the way of stoplights and indicators. Here is just a tip of the iceberg:

- A basic stoplight column will generate stoplights in red, yellow, green and blue when the numbers 1,2,3, and 4 are entered. It's that easy!
- Any Values column can also have an indicator associated with it. And... you get to define how the indicators work.
- Other column types in Milestones Professional can have indicators. These include: duration, earned value, and more.
- Indicators can be based on text. For example, the word "behind" can cause a red stoplight to appear if you set it up that way.
- A special percent indicator is built in to Milestones Professional. It's possible to shade the symbol by a number between 0 and 100 or between 0 and 1 depending on how you set it up.

The "Stoplight Variety" schedule below illustrates many of these points:



For complete "how-to" information for stoplights and indicators, please reference the Help Topics which are built-in to Milestones Professional.